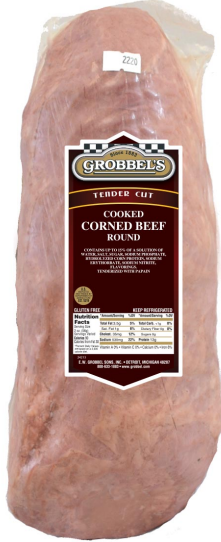


**GROBBEL'S COOKED CORNED BEEF
COOKED - EYE ROUND
2 PK**



ITEM #: 2311
GTIN: 90098558023117
LABEL %: 15



Features and Benefits

Cooked
Premium Foodservice / Deli Cut
Cooked Corned Beef Eye Round is made from Select Graded Eye Rounds trimmed to a 1/8" maximum fat coverage.

PIECE WEIGHT RANGE	4.0-8.0 LBS
PACK	2
AVERAGE CASE WEIGHT	13 LBS
PACKAGE TARE	0.03 LBS / PIECE
BOX TARE	0.90 LBS / BOX
TIER / HIGH	10/8
CASE CUBE	0.39 CUBIC FEET
CASE DIMENSIONS	15"L X 9"W X 5"H
HANDLING	28-36 °F
CODE DATE - PACKAGE	(Y)-JULIAN
CODE DATE - CASE	FREEZE BY
SHELF LIFE TO DISTRIBUTOR	56 DAYS MINIMUM

Nutritional Information

90 CALORIES **1 g** SAT FAT **530 mg** SODIUM **0 g** SUGARS

DIETARY INFO: GLUTEN FREE

Nutrition Facts

Serving Size 2oz (56g)
Serving Per Container Varied

Amount Per Serving	
Calories 90	Calories from Fat 30
% Daily Value*	
Total Fat 3.5g	5%
Saturated Fat 1g	6%
Trans Fat 0g	
Cholesterol 35mg	12%
Sodium 530mg	22%
Total Carbohydrate 0g	0%
Dietary Fiber 0g	0%
Sugars 0g	
Protein 13g	
Vitamin A 0%	Vitamin C 0%
Calcium 0%	Iron 6%

* Percent Daily Values are based on a 2,000 calorie diet. Your daily values may be higher or lower depending on your calorie needs.

Ingredient Statement:

Tenderized with Papain
Contains up to 15% of a solution of Water, Salt, Sugar, Sodium Phosphate, Hydrolyzed Corn Protein, Sodium Erythorbate, Sodium Nitrite, Flavorings

Interested? Contact a Sales Rep
800.633.1883

ewGROBBEL
FOOD FOR GENERATIONS

E.W. Grobbel Sons, Inc.
P: 800.633.1883
F: 313.567.3324
www.grobbel.com