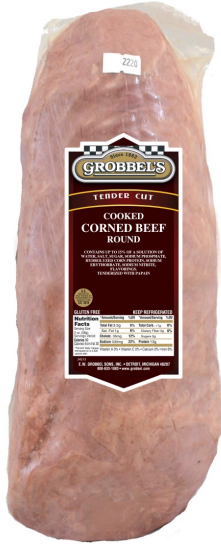


**GROBBEL'S COOKED CORNED BEEF  
COOKED - EYE ROUND  
2 PK**



**ITEM #:** 2311  
**GTIN:** 90098558023117  
**LABEL %:** 15



**Features and Benefits**

Cooked  
Premium Foodservice / Deli Cut  
Cooked Corned Beef Eye Round is made from Select Graded Eye Rounds trimmed to a 1/8" maximum fat coverage.

<b>PIECE WEIGHT RANGE</b>	4.0-8.0 LBS
<b>PACK</b>	2
<b>AVERAGE CASE WEIGHT</b>	13 LBS
<b>PACKAGE TARE</b>	0.03 LBS / PIECE
<b>BOX TARE</b>	0.90 LBS / BOX
<b>TIER / HIGH</b>	10/8
<b>CASE CUBE</b>	0.39 CUBIC FEET
<b>CASE DIMENSIONS</b>	15"L X 9"W X 5"H
<b>HANDLING</b>	28-36 °F
<b>CODE DATE - PACKAGE</b>	(Y)-JULIAN
<b>CODE DATE - CASE</b>	FREEZE BY
<b>SHELF LIFE TO DISTRIBUTOR</b>	56 DAYS MINIMUM

**Nutritional Information**

**90** CALORIES      **1 g** SAT FAT      **530 mg** SODIUM      **0 g** SUGARS

**DIETARY INFO:** GLUTEN FREE

**Nutrition Facts**

Serving Size 2oz (56g)  
Serving Per Container Varied

Amount Per Serving	
<b>Calories 90</b>	Calories from Fat 30
% Daily Value*	
<b>Total Fat 3.5g</b>	<b>5%</b>
Saturated Fat 1g	<b>6%</b>
Trans Fat 0g	
<b>Cholesterol 35mg</b>	<b>12%</b>
<b>Sodium 530mg</b>	<b>22%</b>
<b>Total Carbohydrate 0g</b>	<b>0%</b>
Dietary Fiber 0g	<b>0%</b>
Sugars 0g	
<b>Protein 13g</b>	
Vitamin A 0%	Vitamin C 0%
Calcium 0%	Iron 6%

\* Percent Daily Values are based on a 2,000 calorie diet. Your daily values may be higher or lower depending on your calorie needs.

**Ingredient Statement:**

Tenderized with Papain  
Contains up to 15% of a solution of Water, Salt, Sugar, Sodium Phosphate, Hydrolyzed Corn Protein, Sodium Erythorbate, Sodium Nitrite, Flavorings

Interested? Contact a Sales Rep  
**800.633.1883**

**ewGROBBEL**  
FOOD FOR GENERATIONS  
E.W. Grobbel Sons, Inc.  
P: 800.633.1883  
F: 313.567.3324  
[www.grobbel.com](http://www.grobbel.com)